



Woodbine School

School Travel Plan

Edition #1 June 30, 2023





Edition Tracking

Edition #	Description	Date Finalized
1	Official launch of School Travel Plan including endorsement signature(s)	June 2023
2	Updated to include results of first round of follow-up data collection and implementation tracking to date	June 2023
3	Updated to included second round of follow-up data, implementation tracking to date and revisions to the Action Plan	
...

Team & Endorsement

Committee Members

School STP Committee

- Brenna Fraser, Principal, Woodbine School (April 2022 - June 2023)
- Jen Fournier, Teacher, Woodbine School (April 2022 - June 2022)
- April Johansen, Teacher, Woodbine School (April 2022 - June 2022)
- Jessica Aspinall, Teacher, Woodbine School (April 2022 - June 2022)
- Claire Bignell, Teacher, Woodbine School (September 2022 - June 2023)
- Krystal Lamb, Active School Travel Facilitator, Ever Active Schools (April 2022 - June 2023)

Regional STP Committee: Safe Schools Transportation Advisory Group (Calgary)

Name	Title, Organization
Jacqueline Oriold	Education team, Mobility Operations, City of Calgary
Monique Castonguay	Engineer, Liveable Streets, City of Calgary (former Project Manager, Active and Safe Routes to School)
Katherine Glowacz	Engineer, Liveable Streets, City of Calgary (former Project Manager, Active and Safe Routes to School)
Christopher Jakubowski	Engineer-in-training, Mobility Operations, City of Calgary (former Project

	Manager, Active and Safe Routes to School)
Janet Ho	Traffic Safety Engineer, Mobility Operations, City of Calgary; Project Manager, Active and Safe Routes to School
Brenda Gibson	Manager, Transportation Services, CBE
Shivpal Singh Sidhu	Transportation Team Lead Planning & Transportation, CBE
Jody McKinnon	former Manager, Transportation, CSSD
Andrew Hilton	Manager, Transportation, CCSD
Stephan De Loof	Executive Director, Facility Services, Planning and Transportation Conseil Scolaire FrancoSud
Constable Randy MacDonald	Residential Traffic Safety Unit/Motorcycle Instructor
Eva Friedley	Coordinator, AMA School Safety Patrol
Surendra Mishra	Engineer, Mobility Operations, City of Calgary
Sheena Zimmerman	Engineer, Mobility Operations, City of Calgary
Chad Chudyk	Engineer, Mobility Operations, City of Calgary
Tony Churchill	Manager, Mobility Operations, City of Calgary
Andrea Silverthorne	Safety Manager, Southland Busing
Tracey Coutts	Active and Safe Routes to School Project Coordinator, Ever Active Schools

Endorsement

I endorse the contents of this School Travel Plan:

SCHOOL PRINCIPAL, ON BEHALF OF THE SCHOOL STP COMMITTEE

Name: _____

Signature: _____

Date: _____

LEAD REPRESENTATIVE OF THE REGIONAL STP COMMITTEE

Name: _____ **Job Title:** _____

Signature: _____

Date: _____

Table of Contents

Introduction	1
School Profile	2
Overview of Timeline	7
Vision & Targets	7
Data Collection—Summary of Findings	9
Travel Challenges Summary	15
Action Plan	17
Implementation Highlights	21
Appendix 1: Detailed Timeline	24

Introduction

School Travel Planning (STP) is a community-based approach for increasing rates of safe, active school travel. Active School Travel refers to transportation using human-powered modes such as walking, cycling, scooting, skateboarding and using a wheelchair. Staff, parents, caregivers, and students at our school worked with stakeholders at the regional level to create this School Travel Plan document. We are working together to:

1. increase the number of children using active modes of transportation for school trips to, from, and throughout the school day;
2. decrease traffic congestion at the school site; and
3. increase the number of students using sustainable travel modes, such as school busing and carpooling.

We will revisit and update this document on a regular basis, adapting our Action Plan as necessary and tracking implementation and data collection results.


The STP Process



Green Communities Canada maintains the STP Toolkit online at
www.ontarioactiveschooltravel.ca/school-travel-planning-toolkit.

Background

Woodbine School



School Address
27 Woodfield Way SW Calgary, AB T2W 5E1

403-777-8630

587-933-9934

Woodbine@cbe.ab.ca

<http://school.cbe.ab.ca/school/Woodbine>

Administration
Assistant Principal(s):
Todd Webber

Open School Website

GRADES
K-6

WARD
13

AREA
6

TOTAL ENROLLMENT (As of Sept. 30)
418

SCHOOL PRINCIPAL
Brenna Fraser

TRUSTEE
Nancy Close

EDUCATION DIRECTOR
Michelle Howell

PROGRAMS

- Regular

[Notices](#)
[Enrollment Numbers \(As of Sept. 30\)](#)
[About Our School](#)

- Walk Zone for Woodbine School
- Feb. 14, 2017 | Decision Regarding Junior High School for Students in the Woodbine Community

☐ Attendance Area
 ☐ Walk Zone

School Profile

Date form completed: June 2023

School name	Woodbine School
School type	<input checked="" type="checkbox"/> Public <input type="checkbox"/> Separate <input type="checkbox"/> Private <input type="checkbox"/> Other _____
Year opened	1980
Name of school board	Calgary Board of Education
Total number of students	414
<ul style="list-style-type: none"> Students who receive bus service (i.e., who live in the 'bus zone') 	<p>[# of students who live in the 'bus zone': 35]</p> <p>divided by [total # of students: 414] =</p> <p>8 % of students who live in the 'bus zone'</p>

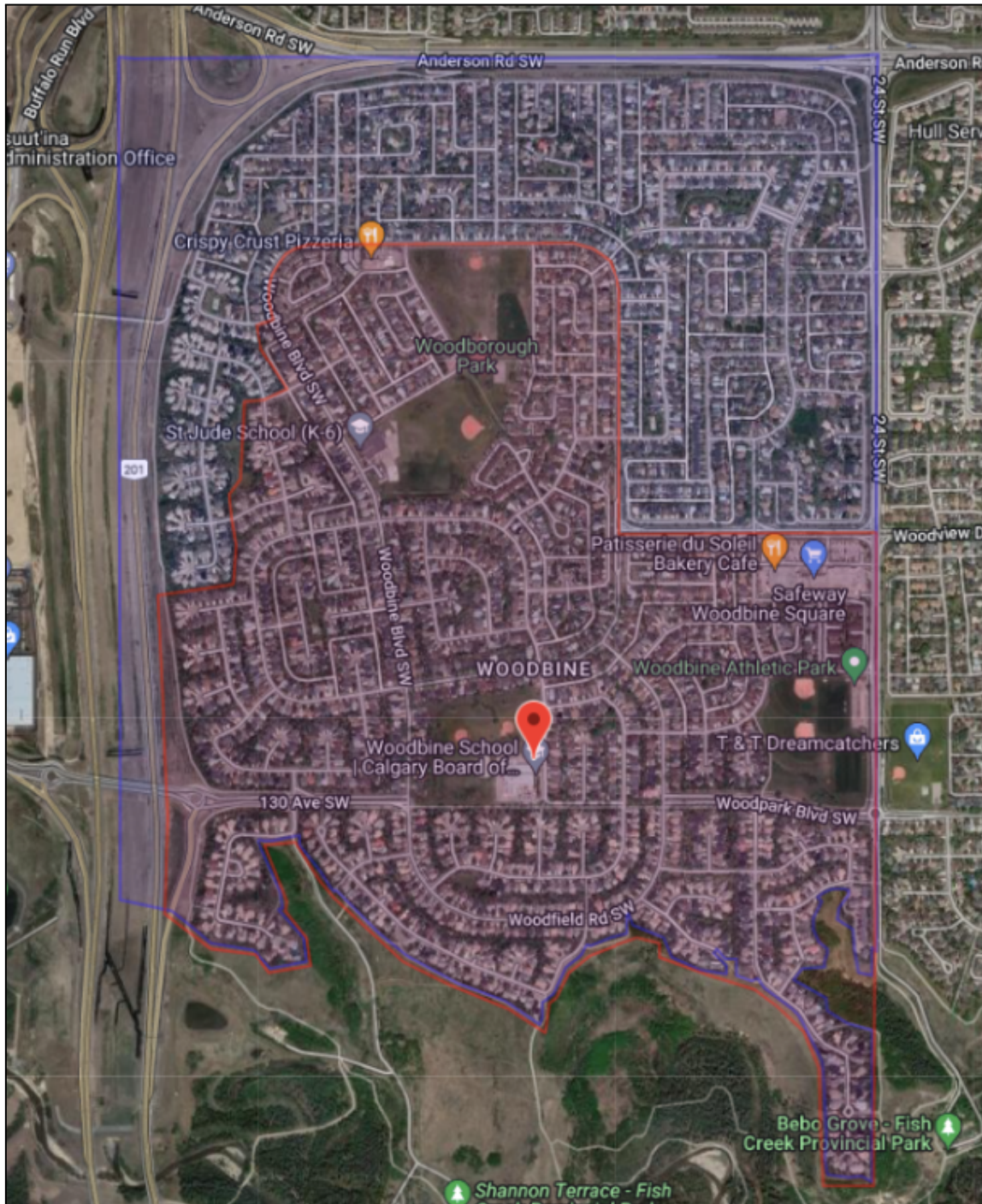
<ul style="list-style-type: none"> Students who live in the 'walk zone' 	<p>[# of students who live in the 'walk zone': 379]</p> <p>divided by [total # of students: 414] =</p> <p>91.5 % of students who live in the 'walk zone'</p>
Grades	<p><input checked="" type="checkbox"/> Elementary (K-6)</p> <p><input type="checkbox"/> Elementary (K-8)</p> <p><input type="checkbox"/> Middle school (6-8 or 7-8)</p> <p><input type="checkbox"/> Secondary (7-12 or 9-12)</p> <p><input type="checkbox"/> All levels (K-12)</p>
Bus policy	<p>'Bus zone' definition: minimum # km between school and home for which grades?</p> <p>1.6 km (for grades: K-6)</p> <p>2.4 km (for grades: 7-12)</p>
School bell times	<p>Morning: 8:55 a.m.</p> <p>Afternoon: 3:40 p.m.</p>
Description of location	<p><input checked="" type="checkbox"/> Urban (e.g., city or town centre)</p> <p><input type="checkbox"/> Suburban</p> <p><input type="checkbox"/> Rural</p> <p><input type="checkbox"/> Other: _____</p>
Socio-economic description of families	<p>% of students who live in lower-income households: 25.6%</p> <p>% of students whose parents have some university education: 28.5%</p>
Special programs at this school that may impact choice of travel mode	<p><input type="checkbox"/> French immersion <input type="checkbox"/> Extended French</p> <p><input type="checkbox"/> Fine arts <input type="checkbox"/> Special needs:</p> <p>_____</p> <p><input checked="" type="checkbox"/> Before and after school day care</p> <p><input type="checkbox"/> Other: _____</p>

<p>Existing transportation facilities at school site</p>	<p>X Bike racks/storage (# bike spaces: 320)</p> <p>X Car parking lot (# car spaces: 32)</p> <p><input type="checkbox"/> Student Loading Zone</p> <p>X School bus drop-off zone</p> <p><input type="checkbox"/> School crossing guards</p> <p><input type="checkbox"/> Student safety patrol</p> <p><input type="checkbox"/> Public transit bus stops serving school</p> <p>X Transportation arrangements to after school programs</p> <p>X Crosswalks</p> <p>X Sidewalks</p> <p><input type="checkbox"/> Other: _____</p>
<p>Existing safety education resources</p>	<p><input type="checkbox"/> Traffic safety education—if so, who provides it, to what grades and how often? _____</p> <p>_____</p> <p><input type="checkbox"/> Pedestrian safety education—if so, who provides it, to what grades and how often?</p> <p>_____</p> <p>_____</p> <p>X Bike safety education—if so, who provides it, to what grades and how often? EAS provided in June 2023</p> <p><input type="checkbox"/> Police officer school liaison</p> <p>X Anti-bullying education—if so, who provides it, to what grades and how often? Yearly - classroom teachers K-6</p> <p><input type="checkbox"/> Other: _____</p> <p>_____</p>
<p>Programs at this school that have goals similar to STP</p>	<p><input type="checkbox"/> EcoSchools Canada certification (level: _____)</p> <p><input type="checkbox"/> Environmental program (specify: _____)</p> <p>X Physical activity program (specify: daily PE)</p>

	X Mental health program (specify: PE&W curriculum, daily K-6)
--	--

Types of school/parent committee communications used/available (e.g., newsletter, website, Facebook page)	X School newsletter (electronic or paper) X School Council newsletter (electronic or paper) <input type="checkbox"/> Automated mass voicemail X Website <input type="checkbox"/> Twitter X Facebook <input type="checkbox"/> Other: _____
Languages used in school communications	English
Languages that would aid communication with parents (if resources permit)	Arabic, Ukrainian, Russian, Chinese
Is the school in a Neighbourhood Watch or Block Parent community?	X Yes <input type="checkbox"/> No
Other information	Many parents choose to drive and not walk or bike.

Map of school area (walk zone in red, attendance area in blue)



Overview of Timeline

Task	Plan	
	Start Date	End Date
Phase 1b: Set-up at school level	April 2022	May 2022
Phase 2: Assess conditions	Oct 2022	Oct 2022
Phase 3: Action planning	Oct 2022	June 2023
Phase 4: Implementation	June 2023	June 2023
Phase 5: Reassess conditions	June 2023	Ongoing
Phase 6: Keep it going	Ongoing	

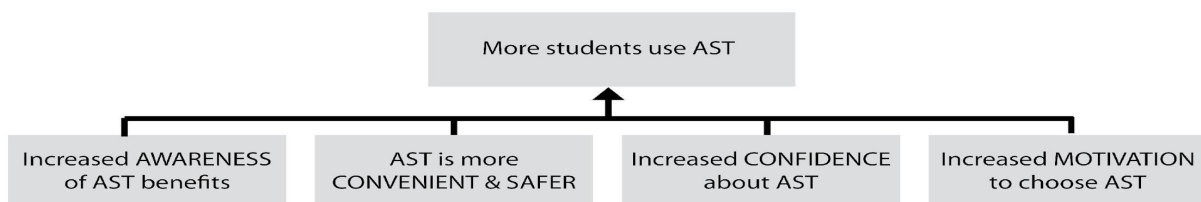
Vision & Targets

Vision

The Active and Safe Routes to School Program partners with Ever Active Schools to help increase the number of students and families choosing active and more sustainable transportation modes for school trips. Active School Travel is a provincial initiative that promotes the use of human-powered, non-motorized transportation modes for trips to and from school as well as throughout the school day, including walking, cycling, scootering, skateboarding, and using a wheelchair.

High-Level School Travel Planning Goals

The main goal of School Travel Planning is to get more students to use active transportation modes. One way to increase the number of students walking and wheeling is to reduce congestion and increase safety at the school site, which is another key goal of the work. The diagram below shows how all the high-level goals of this work fit together. Our School Travel Plan has been created with these high-level goals in mind, i.e., it contains a comprehensive Action Plan that addresses engineering, education, enforcement, encouragement, and evaluation so that all of these goals are supported.



Key Targets for Our School

The table below shows our key baseline metrics as well as short- and long-term targets we have set.

Metric	Baseline # (May 2022)	Target # (after 1 year)	Follow Up # (June 2023)
Walking Metrics			
% of students who walk TO school	30	31	34
% of students who walk part way TO school	4	5	0
% of students who walk FROM school	38	39	34
% of students who walk part way FROM school	4	5	0
Wheeling Metrics			
% of students who wheel TO school	6	7	21
% of students who wheel FROM school	8	9	21
School Bus Metrics			
% of students who ride the school bus TO school	8	9	5
% of students who ride the school bus FROM school	6	7	5
Private Vehicle Usage Metrics			
% of students who get a ride TO school in a carpool	4	5	2.6
% of students who get a ride TO school in a private vehicle	40	39	24
% of students who get a ride FROM school in a carpool	2	3	2.6
% of students who get a ride FROM school in a private vehicle	38	37	26

Data Collection—Summary of Findings

Refer to the timeline in Appendix 1 for details about which data collection tools were used at which times.

Baseline Family Travel Survey Results (May 2022)

Travel TO School

ANSWER CHOICES	RESPONSES	
▼ Walk	30.00%	15
▼ Walk partway (at least one entire block)	4.00%	2
▼ Bicycle	6.00%	3
▼ School Bus	8.00%	4
▼ Public Transit	0.00%	0
▼ Carpool (Two or more families sharing)	4.00%	2
▼ Car (Just my family)	40.00%	20
▼ Other (please specify mode of travel) Responses	8.00%	4
TOTAL		50

Travel FROM School

ANSWER CHOICES	RESPONSES	
▼ Walk	38.00%	19
▼ Walk partway (at least one entire block)	4.00%	2
▼ Bicycle	8.00%	4
▼ School Bus	6.00%	3
▼ Public Transit	0.00%	0
▼ Carpool (Two or more families sharing)	2.00%	1
▼ Car (Just my family)	38.00%	19
▼ Other (please specify mode of travel) Responses	4.00%	2
TOTAL		50

Follow Up Family Travel Survey Results (June 2023)

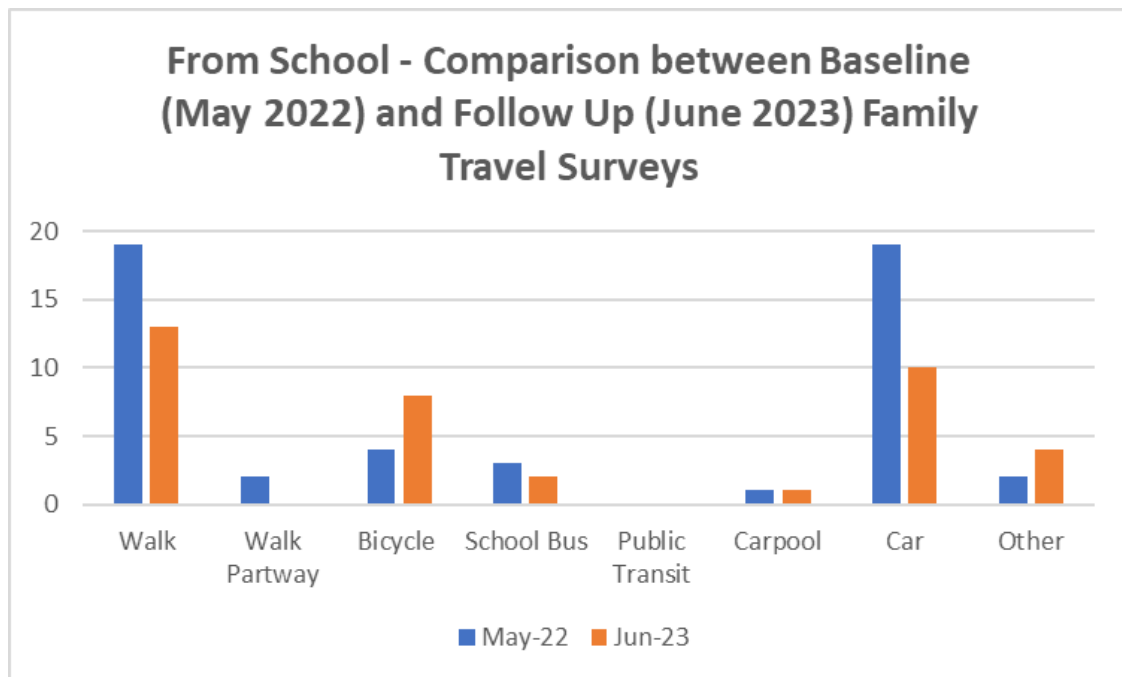
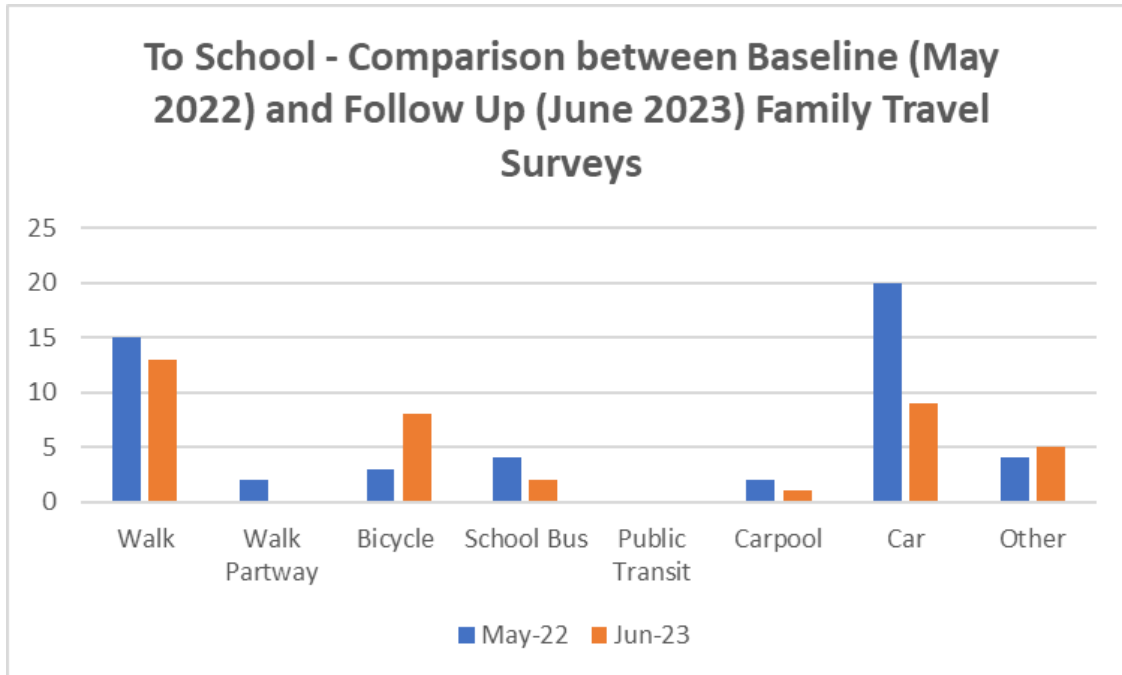
Travel TO School

ANSWER CHOICES ▼	RESPONSES ▼	
▼ Walk	34.21%	13
▼ Walk partway (at least one entire block)	0.00%	0
▼ Bicycle	21.05%	8
▼ School Bus	5.26%	2
▼ Public Transit	0.00%	0
▼ Carpool (Two or more families sharing)	2.63%	1
▼ Car (Just my family)	26.32%	10
▼ Other (please specify mode of travel) Responses	10.53%	4
TOTAL		38

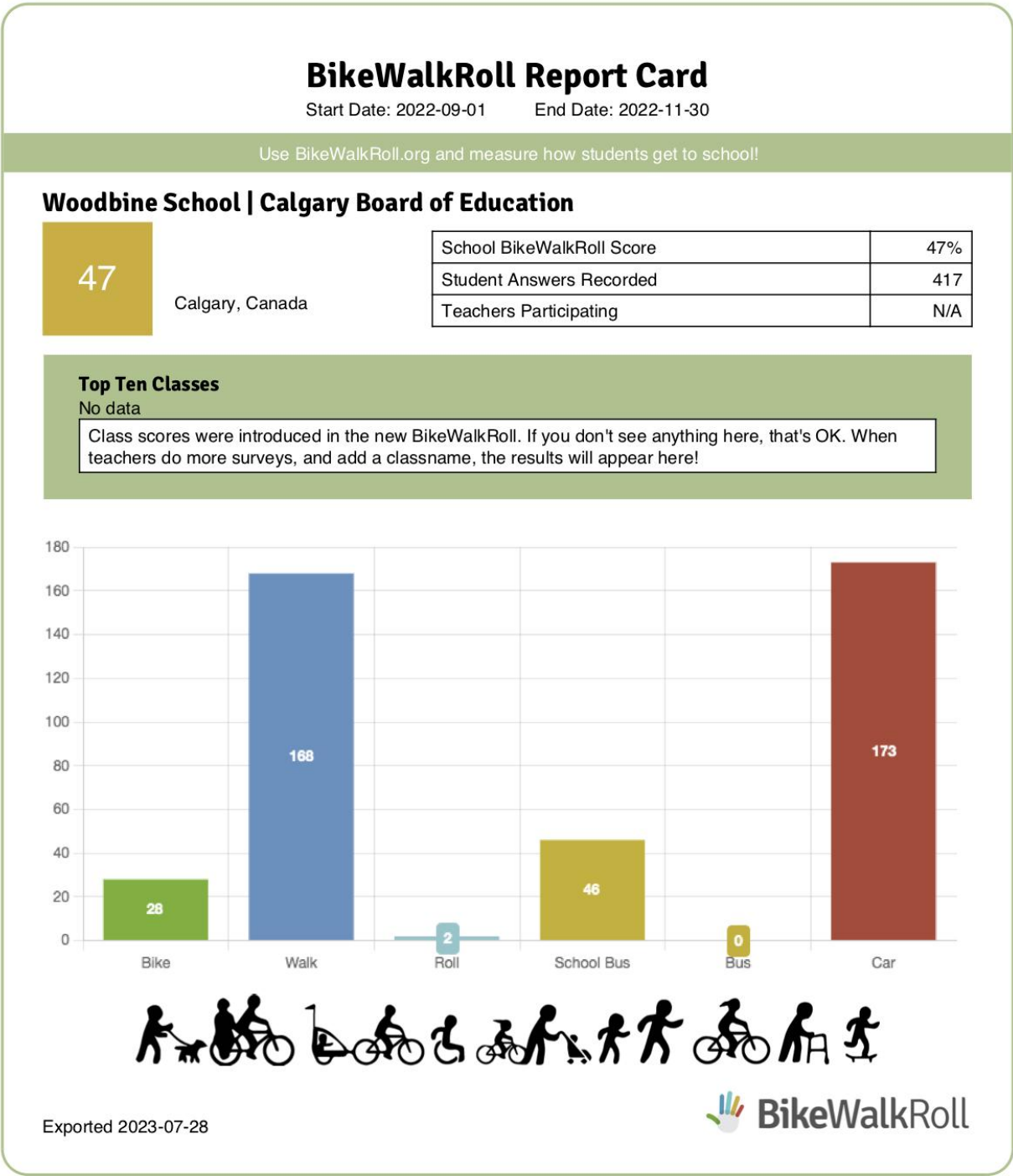
Travel FROM School

ANSWER CHOICES ▼	RESPONSES ▼	
▼ Walk	34.21%	13
▼ Walk partway (at least one entire block)	0.00%	0
▼ Bicycle	21.05%	8
▼ School Bus	5.26%	2
▼ Public Transit	0.00%	0
▼ Carpool (Two or more families sharing)	2.63%	1
▼ Car (Just my family)	23.68%	9
▼ Other (please specify mode of travel) Responses	13.16%	5
TOTAL		38

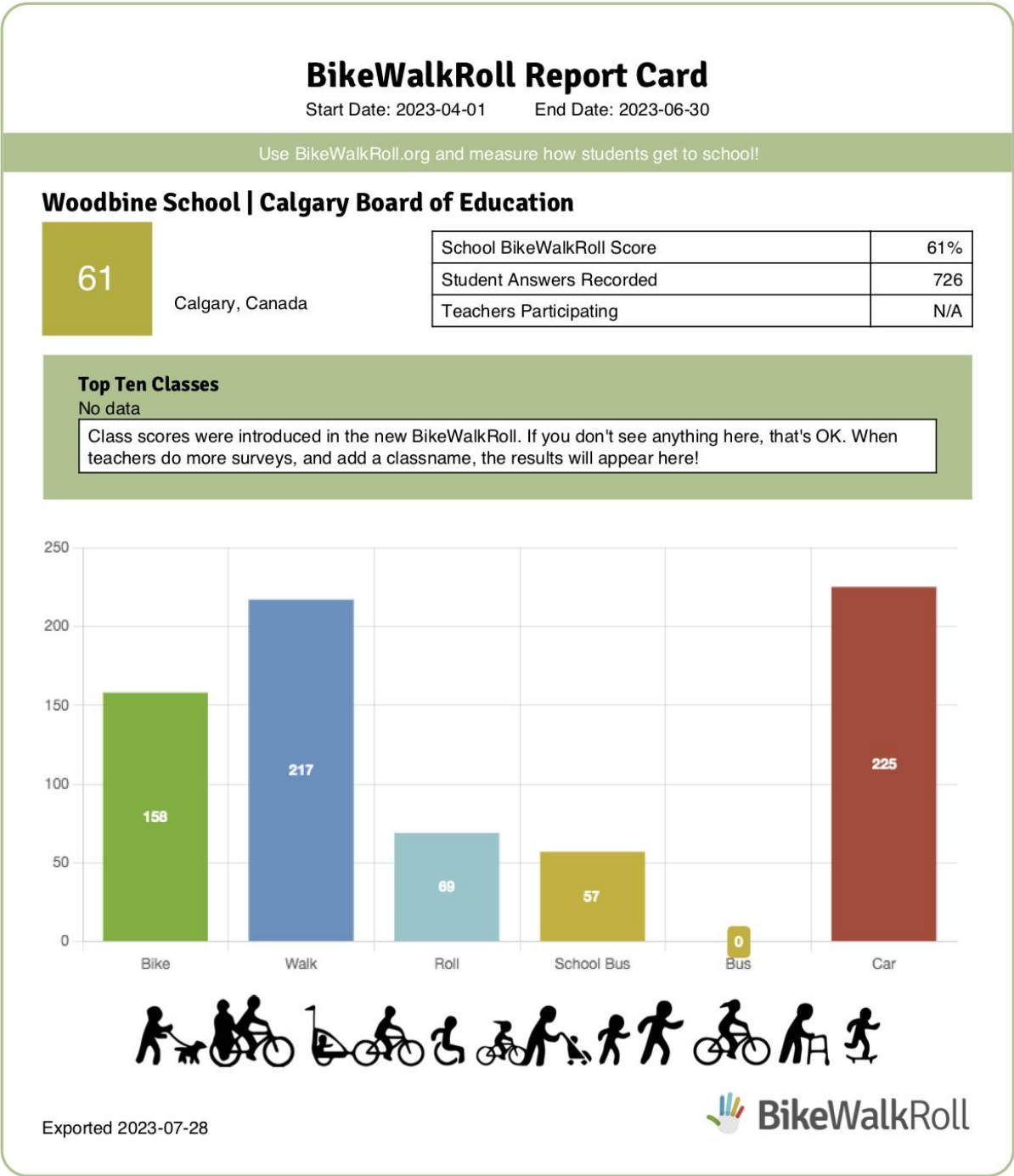
Comparison between Baseline (May 2022) and Follow Up (June 2023) Family Travel Survey Results



Baseline Data Results from BikeWalkRoll taken the week of October 26, 2022



Follow Up Data Results from BikeWalkRoll taken the week of June 12, 2023



*BikeWalkRoll score is the combined percentage of people who said they rode a bike or walked.

Key Takeaways From Data:

- Baseline/Follow Up Family Travel Survey results indicate a decrease of 16% in families whose children travel to school in a single family vehicle, and a decrease of 12% in families whose children travel from school in a single family vehicle;
- The walk rate for travel to school increased by 4% and the walk rate for travel from school decreased by 4%;
- Wheeling rates increased significantly by the end of the project: Baseline Family Travel Survey data indicate 6 and 8% of students wheeling to/from school, whereas Follow Up survey results indicate an increase of 21% for wheeling both to/from school;
- Woodbine School's BikeWalkRoll score was the highest in June of 2023 (56) and lowest in October of 2022 (47). The BikeWalkRoll score increased by 9% over the course of the 2022/23 school year.

Additional Feedback from Baseline Family Travel Survey (May 2022)

I would encourage my child to walk to and from school more often if...

ANSWER CHOICES	RESPONSES	
Others to walk with	48.00%	24
Once child is older	50.00%	25
Pedestrian safety training	38.00%	19
Improved sidewalks and crossings	46.00%	23
Reduced traffic volume and congestion in school zone	22.00%	11
Traffic calming in school zone (e.g., lower vehicle speeds, more careful drivers)	26.00%	13
Not applicable, child is eligible to ride the school bus	4.00%	2
Child already walks	26.00%	13
Other (please specify)	18.00%	9
Total Respondents: 50		

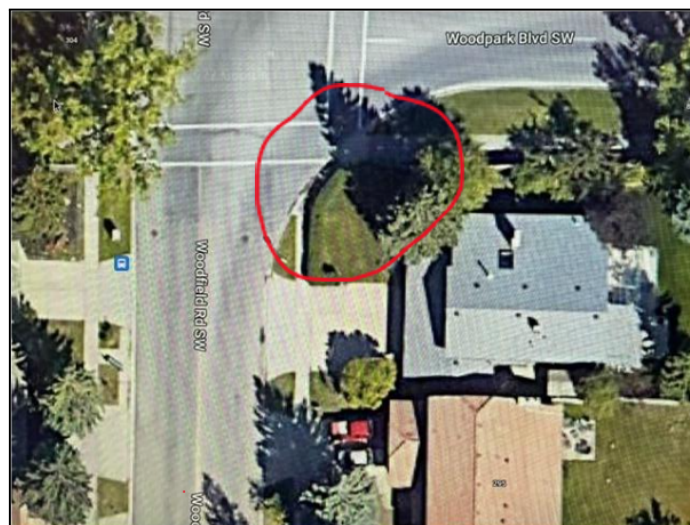
I would encourage my child to wheel to and from school more often if...

ANSWER CHOICES	RESPONSES	
Others to wheel with	44.00%	22
Once child is older	48.00%	24
Wheeling safety and skills training	36.00%	18
Access to equipment (bicycle, scooter, skateboard, helmet, lock)	2.00%	1
Secure bicycle/scooter/skateboard storage at school	28.00%	14
Wheel-friendly routes (e.g., protected cycle lanes)	34.00%	17
Reduced traffic volume and congestion in school zone	22.00%	11
Traffic calming in school zone (e.g., lower vehicle speeds, more careful drivers)	34.00%	17
Not applicable, child is eligible to ride the school bus	4.00%	2
Child already wheels	16.00%	8
Other (please specify)	16.00%	8
Total Respondents: 50		

Travel Challenges Summary

The main travel challenges we face at our school are:

1. Although situated along a shared pathway and close to many convenient pathway connections, many families choose to drive to school instead of walking or wheeling. Woodbine School prioritized educating and encouraging families that walking and wheeling to/from school was a convenient option versus being picked up and dropped off in private vehicles.
2. There is concern about pedestrian visibility at the corner of Woodfield Road SW and Woodpark Boulevard SW, a busy intersection for students traveling from the east side of the catchment area to navigate. There is a hedge on the corner that is about 4-5 feet tall on private property which impedes the visibility of pedestrians, particularly in the spring and summer. The crosswalk is also set back far from the intersection and there are concerns about speeding by vehicles coming around the corner.



3. There are concerns with parents using the bus loading zone for pick up and drop off when there is ample parking along Woodfield Way SW, to the north of the school, adjacent to the school field.
4. There are concerns with jaywalking by parents and students across Woodfield Way SW, from a pathway at the north side of the school building. See photo and map below.



5. Prior to COVID, Woodbine School had an AMA Safety Patrol in place and there is a desire by the school and parents to have the patrols reinstated to further support safe active travel.

6. The shared pathway on the south side of the school site becomes icy in the Winter and Spring, with the freeze and thaw cycle, making it a safety concern for students. There is also a lack of direct connection to the school lot from the pathway, making it difficult for students to access the school site and wheeling equipment parking from the south side, particularly in the winter months when snow builds up.

Detailed findings from the Traffic Observation and Walkabout can be found as appendices at the end of this document.

Action Plan

This Action Plan describes our planned activities for the short, medium and long term (e.g., 3+ yrs).
It was most recently updated on: June 30, 2023.

Woodbine School Action Plan 2022 - 23

Key: **Complete**, **In progress**, **Unsuccessful**, **Not started**

Action	Category	Start Date	Completion Date	Lead	Notes
Woodbine School Profile					Woodbine School Profile
EASiR application completed		March 31, 2022	March 31, 2022	Brenna Fraser	EASiR week: May 30 - June 3, 2022
EAS In Residence Project Introduction meeting for staff	Education	April 13, 2022	April 13, 2022	Tracey Coutts, Krystal Lamb, Jessica Aspinall	
AST In Residence Project Introduction meeting for parent council	Education	NA	NA		Did not proceed
Family Travel Surveys dissemination	Evaluation	April 25, 2022	May 30, 2022	Tracey Coutts, Brenna Fraser, Jessica Aspinall	Woodbine School Family Travel Survey results
EASiR Week delivery	Education, Evaluation, Encouragement	May 30, 2022	June 3, 2022	Tracey Coutts, Krystal Lamb, Jessica Aspinall, Ms. Fournier, Ms.	Woodbine School EASiR slide decks and findings

				Johansen	
Bike Walk Roll baseline data collection	Evaluation	October 2022	October 2022	Claire Bignell, Krystal Lamb	
EAS-led walkabout	Evaluation	October 27, 2022	October 27, 2022	Krystal Lamb, Claire Bignell, Brenna Fraser	📎 Woodbine School Walkabout Report -...
Update No Scooter, No Skateboard, No Rollerblading sign	Education, Encouragement	October 2022	Ongoing	Brenna Fraser, Claire Bignell, Krystal Lamb	School to email Facilities Operator to make addition of "on school property" signage
Jaywalking enforcement	Education; Enforcement	November 2022	Ongoing	Claire Bignell, Brenna Fraser, CPS, Krystal Lamb	Nov 2022 - CPS informed of issue and visited the week of November 21/22; witnessed jaywalking and blocking of driveways along Woodfield Way SW
Improve visibility at Woodpark Blvd SW @ Woodfield Rd SW, popular crosswalk (school's top priority)	Social Environment s, Partnerships	October 2022	December 2022	Claire Bignall, Brenna Fraser, Krystal Lamb	Nov 2022 Update - 311 request to deal with hedges on SE corner, at 299 Woodfield Rd SW, due to hindrance of visibility for pedestrians Dec 2022 Update - Call with Bylaw. Due to corner of visibility triangle, the homeowner is not required to trim or remove hedges for visibility concerns. Bylaw left a card with the homeowner to initiate a discussion about concerns but no further action is required by bylaw or homeowner on issue. 📎 Corner Visibility Triangle.pdf
Improve visibility at 130 Ave SW @ Woodfield Rd SW, heavily used crosswalk due to direct pathway access to school field but very	Social Environment s, Partnerships	October 2022	November 2022	Claire Bignall, Brenna Fraser, Krystal Lamb	Nov 2022 Update: 311 request to trim bush in front of 60 Woodfield Rd SW; call from Urban Forestry, bush will be rejuvenated within a week (cut to within 6 inches from the ground) Nov 2022 - CPS informed of issue and visited the week of November 21/22; CPS

busy intersection					noted compliance of 50 km/h speed limit while present.
Investigate adding AMA Safety Patrol to Woodfield Way SW @ Woodfield Crescent SW/Staff Parking Lot Entrance	Education; Encouragement	October 2022	June 2023	Claire Bignall, Brenna Fraser, Krystal Lamb	Oct 2022 Update: School would consider AMA Safety Patrol at east crosswalk of this intersection, not northern crosswalk due to speeding around the corner; Jan 2023 update: AMA contacted to begin process to assess both west and east legs of the Woodfield Way SW @ Woodfield Crescent SW intersection June 2023 Update: Admin staff were not comfortable with AMA safety patrol being reinstated at this time.
Investigate issues with parents dropping off and using cut through to Woodhaven Place SW cul-de-sac	Education, Encouragement	October 2022	Ongoing	Claire Bignall, Brenna Fraser, Krystal Lamb	Oct 2022 Update: Determine alternate park and walk locations; School communicates alternate locations through newsletter as there is no parking signage in cul-de-sac
Improve safety at Woodbine Blvd SW @ Woodfield Way SW, RFB intersection	Education, Encouragement, Enforcement	October 2022	June 2023	Claire Bignall, Brenna Fraser, Krystal Lamb, CPS	Nov 2022 - CPS informed of the issue and visited the week of Nov 21/22. CPS noted that students need to activate the RRFB every time they want to cross the road.
Winter Walk Day registration and planning (WWD Feb, 2023); use one or more of the walking route maps that were created in December to plan the route; invite the community association to participate and help promote	Encouragement; Social Environment s, Partnerships	January/February 2023	February 1, 2023	Claire Bignell, students	WWD registration link: https://shapeab.com/winter-walk-day/ Jan 2023 Update; School signed up, has an event already Feb 1 but will go out to play Winter Walk Bingo throughout the week; CofC Swag order to reward and encourage active travel, to be passed out during supervision to students traveling actively

Earth Day event planning and promotion (Earth Day April 22, 2023)	Education, encouragement; Teaching and Learning, Social Environment s	April 2023	April 2023	Claire Bignell, Principal Fraser, Krystal Lamb	Earth Day fell on a Saturday this year so encouragement was done in the week leading up.
Wheel Week/Bike to School Day	Education; Teaching and Learning, Partnerships	January 2023	June 2023	Claire Bignell, Principal Fraser, Krystal Lamb	Jan 2023 Update: Plan for springtime event to encourage more wheeling, maybe a bike rodeo or tie into Wheel Week; CofC shared some bike path maps and slap bands for AST encouragement; May 2023 Update: Lead up to Wheel Week, Ms. Bignell to share wheel-focused soundbytes for classroom and social media use June 6 Div 1 and Div 2 cycling safety presentations by EAS; June 7 Bike Rodeo day. 2 classes per 30 minutes will cycle through cycling skill stations. Helmets, bells, locks will be raffled off after use during the day.
Initiate a Lend-a-lock program	Education, Encouragement	May 2023	September 2023	Claire Bignell, Krystal Lamb	Phys Ed teacher Ms. Bignell to start using U-locks in lend-a-lock library in new school year;
Follow Up data collection, including Family Travel Survey and Bike Walk Roll	Evaluation	May, June 2023	June 2023	Claire Bignell, Krystal Lamb	
iWalk - International Walk to School Week	Education; Teaching and Learning, Partnerships	October 2023		Claire Bignell, Brenna Fraser, students	https://shapeab.com/iwalk/

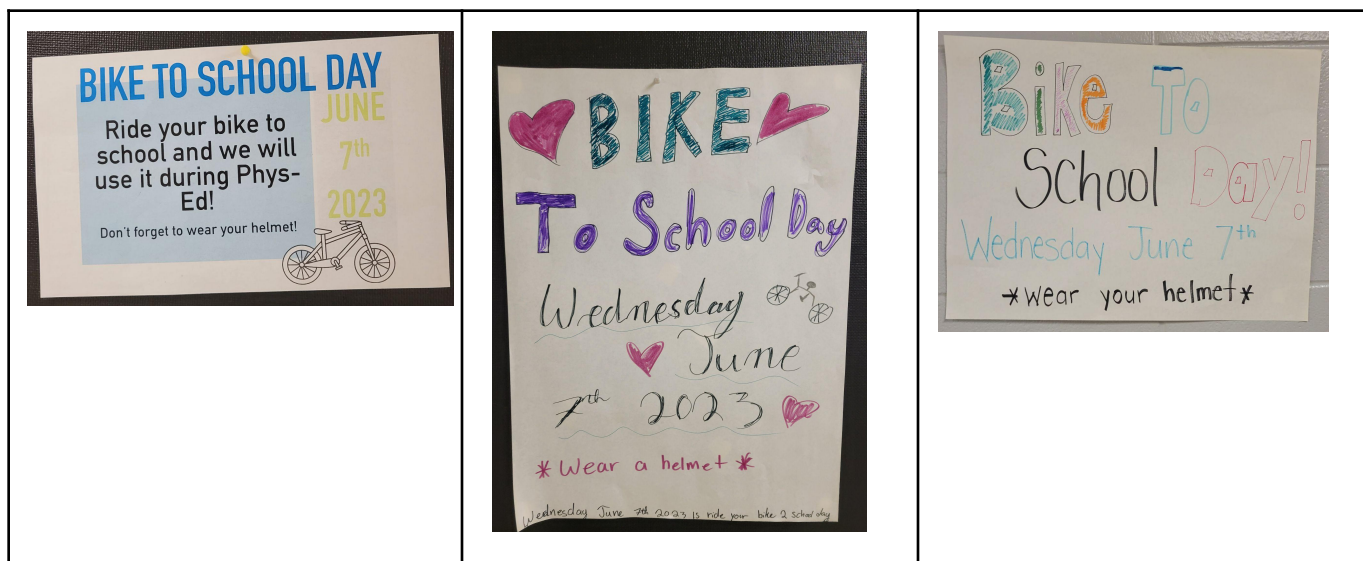
Implementation Highlights

Below are details about some of the action plan items we've successfully implemented so far. For information about the status of our progress on all Action Plan items, see the Implementation Status column in our Action Plan.

Request to City of Calgary 311 regarding a large bush blocking pedestrian visibility at 130 Ave SW @ Woodfield Rd SW resulted in Urban Forestry rejuvenating (cutting to within 6 inches from the ground) the bush and improving pedestrian visibility for Woodfield Rd SW northbound traffic approaching the marked crosswalk at 130th Avenue SW.

Before	After
	

Months of planning by teacher champion Claire Bignell went into the Wheel Week initiative, to educate and encourage Woodbine School students to wheel to/from school. The week prior to Wheel Week (June 5-9, 2023), staff shared several wheeling education videos with students in preparation for Wheel Week and Bike to School Day held on June 7, 2023. Student-designed posters were placed around the school in the week leading up to Wheel Week to encourage participation.



The day prior to Bike to School Day, EAS staff presented, *City Cycling Strategies: Getting Around Safely and Comfortably*, to all Division 1 and Division 2 students, which highlighted cycling rules, risks, helmet checks, proper apparel, ABC Bike Check, cycling etiquette, and planning a safe route.

Teacher champion Claire was able to secure a donation of 6 child and youth bicycles from Two Wheel View to support Bike to School Day so that every single student in the school, regardless of whether they owned a bicycle or not, was able to participate in the day's activities. ASRS project funds were used to purchase 12 various sizes of bicycle helmets for any student without a helmet to use as well. Funds were also used to purchase 25 bike bells, all raffled off to students to support Wheel Week.





Bike to School Day began with students commuting to school on their bikes, enough to fill their gymnasium with bicycles, which were arranged by classroom. The day began with teacher champion Claire introducing each class to the stations and a helmet check before every student had the chance to visit 4 stations led by the Grade 5 leadership team for a 30 minute session. Stations included hand signals, slow ride for balance, Figure 8s for maneuvering, and a shared pathway station that tested shoulder checking, hand signaling, and responding to road signage while riding. Students were all given a City of Calgary Pathways and Bikeways map, along with an ABC Bike Check review sheet at the end of their sessions.




Plans for a Rolling School Bus are underway for the 2023/24 school year. Maps and further information about the program for parents will be distributed in the fall, where teacher champion Claire, alongside school administrators, plan to each meet students at predetermined locations before school and bike into the school together as a group. There were plans to include this in the Wheel Week activities for June 2023 but time constraints pushed the initiative into fall 2023.

A set of 24 bike locks (u-locks and chain locks) were purchased with ASRS project funds to begin a Lend-A-Lock program at the school in the fall, where students can borrow a lock from the office for the day to properly secure their wheeling equipment, should they not have a lock or have forgotten to bring one.

Appendix 1: Detailed Timeline

Task	Start Date	End Date	Document Links
PHASE 1b: SET-UP AT SCHOOL-LEVEL			
Complete School Profile	May 2022	May 2022	
Notify school community about the project	May 2022	May 2022	
PHASE 2: ASSESS CONDITIONS			
Conduct Student Travel Survey	Oct 2022	Oct 2022	https://bikewalkroll.org/SurveyCentres/view/1047/?comparison_date=2023-06-12#school-today-score
Data entry and analysis of Student Travel Survey, and record key highlights in School Travel Plan	Oct 2022	June 2023	
Conduct Family Survey	April 2022	May 2022	 Woodbine...
Data entry and analysis of Family Survey, and record key highlights in School Travel Plan	May 2022	June 2023	
Conduct Traffic Observation	Oct 2022	Oct 2022	 Woodbine...  Woodbine...
Conduct Walkabout	Oct 2022	Oct 2022	 Woodbine...
Write Travel Challenges section of School Travel Plan	July 2023	July 2023	
Finalize Vision & Targets	Oct 2022	June 2023	
Share results	June 2023	June 2023	
PHASE 3: DEVELOP ACTION PLAN			
Write draft Action Plan with School STP Committee	Oct 2022	Oct 2022	
Finalize entire School Travel Plan document and get commitment from stakeholders in writing	Sept 2023		

Task	Start Date	End Date	Document Links
PHASE 4: IMPLEMENT ACTION PLAN			
Track implementation progress and celebrate success	June 2023	June 2023	
PHASE 5: REASSESS CONDITIONS			
Conduct Student Travel Survey	June 2023	June 2023	https://bikewalkroll.org/SurveyCentres/view/1047/?comparison_date=2023-06-12#school-today-score
Integrate data collection findings into School Travel Plan	July 2023	July 2023	 Woodbine ...
Update the "Action Plan" and any other sections if necessary, and publish the 2nd edition of the School Travel Plan			
Communicate results and lessons learned	Sept 2023	Sept 2023	
PHASE 6: KEEP IT GOING			
Build community capacity, i.e., identify school and regional level champions	Sept 2023		
Hold a final handover meeting with the school committee	Sept 2023		
Have a handover meeting with lead champions	Sept 2023		